



NEWSLETTER






13th December 2024

The Woodhouse Support Hub
<https://sites.google.com/woodhouse.academy/support>




How to get in touch

 @WoodhousePA  0121 464 1769  www.whp.greenheartlearning.org

 enquiries@whp.greenheartlearning.org

 families@whp.greenheartlearning.org

- Use this for any queries. Monitored by the Inclusion Team
- You can also send us anything you'd like put in the newsletter. This can be photos, learning, resources and any good news stories you may have.

 sensupport@whp.greenheartlearning.org

- Use this for any queries about any additional learning needs or concerns.

NEXT WEEK

Here's what's coming up next week:

Monday 16th December, 1:30pm - KS2 Christmas Carol Concert at St Faith and St Lawrence

Tuesday 17th December, 9:15am - KS1 Nativity for parents

Wednesday 18th December - Christmas Dinner Day

Wednesday 18th December, 2:30pm - KS1 Nativity for parents

Friday 20th December - Last day of term. Christmas Parties - Non-uniform/Christmas Jumpers



Stars of the Week

The following children are Stars of the Week for the week ending 13th December.

Reception

Valerie
Vienna
Ryan
Grace

Year One

Sire
Talia
Maranatha
Darin

Year Two

Jesse
Miles
Willow
Mario

Year Three

Audrea
Sammy
Ariel
Benjamin

Year Four

Louie
Destiny
Felix

Alfie
Inayat

Year Five

Nibras
Aisosa
Kirstyn
Noon

Year Six

Amber
Nithal
Helen
Caiden

Rainbow Room / Zone

Rafay



Battle of the Bands

Year 3: 1st Nabeel, 2nd Ryan, 3rd Audrea
Year 4: 1st Roman, 2nd Emmanuel, 3rd Rahman
Year 5: 1st Courtney, 2nd Freya, 3rd Kirstyn
Year 6: 1st Charisma, 2nd Raphael, 3rd Adelina

Battle of the Band Winning classes: 3A, 4H, 5H & 6D





School Dinner Menu

16th – 20th December

NOTE: We operate a 3-week rolling menu. Keep an eye on the menu each week for changes.

We use a range of suppliers, including local businesses so menus are subject to change if items are unavailable.

Monday	Tuesday	Wednesday	Thursday	Friday
Pork or Vegan Sausages	Breaded Fish	 <p>Christmas Dinner Day See menu below</p> <p>There will be no other options available today so please provide a packed lunch if your child is not having a Christmas Dinner</p> 	Jacket Day	Pizza Day
Mashed or New Potatoes	Vegetable Chilli		Jacket Potato with a Selection of Fillings:	Cheese and Tomato or Pepperoni Pizza
Mixed Vegetables	Herby Diced Potatoes with Mixed Vegetables or Baked Beans		Beef or Quorn Chilli, Baked Beans, Cheese, Tuna or Coleslaw	With Chips and Baked Beans or Vegetables
Gravy	Sweet Chili Sauce			
Assorted Cold Desserts	Jam Doughnuts			Selection of Hot Desserts and Custard
Fresh Fruit and Fresh Salad Bar available daily				

Food Allergies

In order to keep our dietary records up to date, please inform the main office of any changes to your child's dietary requirements, allergies and intolerances. We are able to cater for most requirements but must know in advance.

If your child only eats Halal meats but can eat fish, please also let the main office know. We do not serve Halal meats.

Please either contact the main office on 0121 464 1769 or email us on families@whp.greenheartlearning.org

Please also remember that we are a NUT FREE SCHOOL

Christmas Dinner Day

Wednesday 18th December

Roast Turkey
or Roast Quorn

Pigs in Blankets
or Vegan Sausage

Stuffing,
Mashed Potatoes &
Roast Potatoes

Peas and Carrots
Brussel Sprouts
Honey Glazed Parsnips

Gravy and Cranberry Sauce

Festive Ice Cream
Iced Santa Sponge
Mince Pies with Cream

Blackcurrant and Orange Squash

attendance ~~MATTERS~~


2nd – 6th December

Whole School Attendance for the year currently running at: 94.55%

Last week's attendance:

EYFS & KS1: **92.95%** KS2: **93.89%** Whole School: **93.58%**

Our Attendance target for this coming year is 97%

Class	Attendance for the week		Class	Attendance for the week
Nursery	92.77%		3A	93.55%
RL	76.67%		3H	96.88%
RW	82.41%		4H	93%
1B	93.33%		4R	87.33%
1O	95%		5H	93.55%
2W	98.62%		5FP	93.10%
2P	91.72%		6D	97.33%
RR	83.13%		6WO	95.17%



Congratulations to **2W** who had the best class attendance last week.

Well done to **6D** who had the best class attendance in KS2 last week.

Will you help your class have the best class attendance?

Academic Year 2024 - 2025



Autumn Term 2024

Monday 16th December – KS2 Christmas Carol Concert
– St Faith & St Lawrence Church – 1:30pm start – Parents Invited
Tuesday 17th December – KS1 Nativity – 9:15am
Tuesday 17th December – Parent and Community Forum Meeting
– 2pm in the Canteen – All Welcome
Wednesday 18th December – KS1 Nativity – 2:30pm
Wednesday 18th December – Christmas Dinner Day
Thursday 19th December – Year 4 Parent’s Christmas Workshop – 2 – 3:15pm
Friday 20th December – Non-uniform / Christmas Jumpers party day (no fees required)
Term ends: Friday 20th December

Spring Term 2025

Monday 6th January – School Closed to all children for INSET Day
Term Starts: Tuesday 7th January
Monday 3rd February – 5FP Class Assembly – Parents invited
Monday 10th February – 6D Class Assembly – Parents invited
Half-term: Monday 17th February to Friday 21st February
Monday 3rd March – 5H Class Assembly – Parents invited
Monday 10th March – 2W Class Assembly – Parents invited
Monday 17th March – 1O Class Assembly – Parents invited
Monday 31st March – 2P Class Assembly – Parents invited
Term ends: Friday 11th April

Summer Term 2025

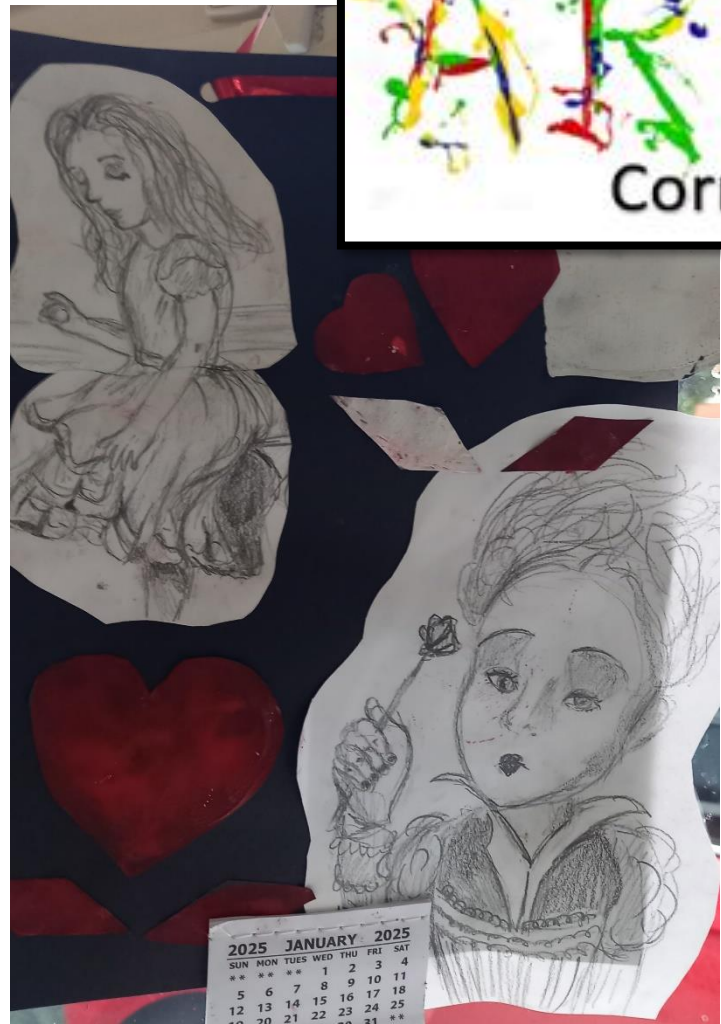
Term Starts: Monday 28th April
Half-term: Monday 26th May to Friday 30th May
Monday 19th May – 1B Class Assembly – Parents invited
Monday 16th June – 4R Class Assembly – Parents invited
Monday 23rd June – 3H Class Assembly – Parents invited
Monday 16th – Wednesday 18th June – Year 6 Boundless Outdoors Residential – Please make payments via MCAS.
Term ends: Monday 21st July

Further dates here: <https://www.woodhouse.priacademy.co.uk/news-and-events/school-events>



The
ART
Corner

Amazing
calendars by
Year 4 & 6



2025 JANUARY 2025						
SUN	MON	TUES	WED	THU	FRI	SAT
**	**	**	1	2	3	4
5	6	7	8	9	10	11
12	13	14	15	16	17	18
19	20	21	22	23	24	25
26	27	28	29	30	31	**



WOODHOUSE PRE-LOVED ESSENTIALS

We have a wide range of pre-loved uniform and non-school uniform items free of charge to those who need them. You are more than welcome to come and help yourself anytime.

We also have shoes, trainers, coats, hats, gloves, scarves and bags available.

Once Christmas has passed, if you have any Christmas jumpers that no longer fit we will gladly take them off your hands to rehome.



We are in the process of revamping the clothing bank to make it more accessible. It won't be out for a few days but is still available on request.

Help with Laundry

Thanks to a company called Smol and their Suds in Schools project, we also have washing and drying facilities within school for families who are struggling with this where we can offer a discrete laundry service.

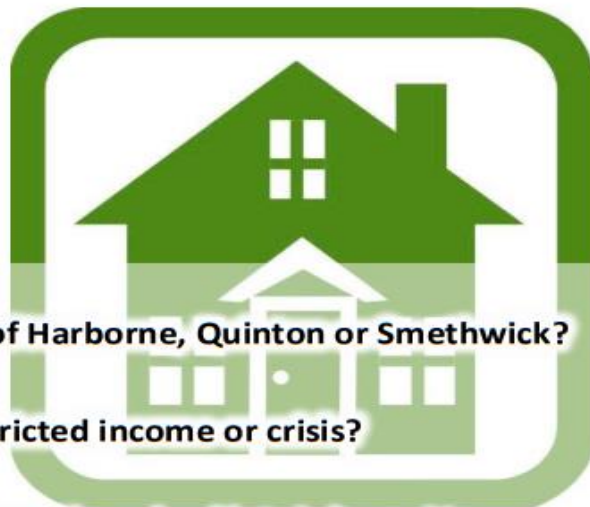
If this is of any help to anyone, please speak with Mr Kennedy.



Household Support

We are also able to access support for a wide range of household items such as white goods, beds, bedding etc.

Please speak with Mr Kennedy, the office staff or email us at families@whp.greenheartlearning.org if you need support with any of this.



Are you a permanent resident of Harborne, Quinton or Smethwick?

Are you struggling due to a restricted income or crisis?

If so, Harborne Parish Lands Charity (HPLC) may be able to help provide you with essential items for your home such as white goods, beds, bedroom storage, or a whole host of support. This list isn't exhaustive but unfortunately we cannot provide cash or debt relief or help with bills.



HPLC is a friendly local charity. Our mission is to help people who are in need and who live in the "Ancient Parish of Harborne" (which even includes a large area of Smethwick!)

Each case is always looked at on an individual basis and application are always followed up with a home visit.



For an informal chat about your circumstances, please contact a member of staff at reception, or in the office, or one of our Support Officers.



There is a wonderful baby bank available that is run by Helen,
a member of the Woodhouse community.

They are able to support new and expecting mothers with a
wide range of items.

If you would like to access this support, you can call or email
using the details below:

Helen

07811070518

Helen.childcare@gmail.com





CHRISTMAS SPORTS CAMP

Woodhouse Primary Academy
Woodhouse Road, Quinton, B32 2DL

Monday 30th December, Tuesday 31st December 2024, Thursday 2nd January and Friday 3rd January 2025

Early booking Special Offer

Bookings before Saturday 21st December:

Full week £50 Full day £14 Half week £25 Half day £8

Bookings on or after Saturday 21st December:

Full week £70 Full day £20 Half week £35 Half day £10

From as little as £1.78 per Hour!

Boys and girls
Ages 5-13

Full Day
8:30am – 3:30pm

Half Day
AM 8:30am – 12:30pm
PM 11:30am – 3:30pm

WE ACCEPT

- Childcare Vouchers
 - Tax-Free Childcare
 - Payment plans available
- (subject to details)

HOW TO BOOK



- Online: www.sporty-stars.com
- Email: enquiries@sporty-stars.com
- Phone: **07473639186**

By booking you agree to our terms and conditions, including first aid and photography consent for our website / social media pages. Full terms & conditions can be found online.

The thrilling spectacle of 'Bulls in the City' is charging into Birmingham during the summer of 2025!

Picture this: a thrilling parade of 40 larger-than-life sculptures, each one a unique masterpiece of artistry, depicting the legendary Birmingham Bullring Bull. But wait, there's more! These majestic sculptures aren't just static displays, they're part of an exhilarating, free-for-all adventure trail designed to thrill families and tourists alike!

Woodhouse Primary Academy will be adopting a small calf sculpture to design and decorate, which will be displayed during the summer trail in shops and attractions up and down local high streets.

The money raised through Bulls in the City will support Birmingham Hospice to ensure the very best care is available, wherever and whenever it's needed. Our mission is to ensure everyone has access to the care of their choice at the end of life. You can donate to this fantastic cause by following the link below:

<https://www.justgiving.com/page/woodhouse-primary-academy-1721055228609>



Brought to you by:



www.bullsinthecity.co.uk

Give them a future to be proud of

Shape the next generation
with Greenheart Primary
Teacher Training.

Register now at greenheartlearning.org

Limited spaces available for September PGCE courses.

GREENHEART
LEARNING PARTNERSHIP 

 **Teach
First** | Training
Partner

Birmingham Central Support Group



autism
west midlands

Light refreshments will be provided.

**Most first Thursdays of every month.
Not during school holidays.**

Join us for our Parent Support Group where you will be able to meet with other parents, share ideas, celebrate achievements, and offer support.

Led by an Autism specialist from Autism West Midlands who can offer advice, guidance and training.

**December 5th
January 9th
February 6th
March 6th**

10am - 12pm

**Ladywood children's center
9 Plough and Harrow Road Birmingham B16 8UR**

Dad's Group

Thursday 28th November
Thursday 19th December
Thursday 30th January

18:00 – 20:00 / 6 – 8pm



One of our autism specialist advisors will be on hand to provide support.



This is a great opportunity to meet other dads, access information and resources and find out what Autism West Midlands have to offer.



Refreshments provided

Langleys Rd, Selly Oak, Birmingham B29 6HT Room 3



Northfield Parent Carer Support Group



autism
west midlands

Light refreshments will be provided, and a member of Autism West Midlands will be present to offer support, advice and guidance.

Join us for our Parent Support Group where you will be able to meet with other parents, share ideas, celebrate achievements, and offer support.

There will also be a focus each session, including the opportunity to benefit from guest speakers and a focus upon wellbeing and embracing neurodiversity.

Fridays 10am - 12pm
13th December
10th January
14th February
14th March

Northfield Baptist Church

789 Bristol Road South Northfield B31 2NQ



Kings Heath Parent Carer Support Group



Join us for our Parent Support Group where you will be able to meet with other parents, share ideas, celebrate achievements, and offer support.

There will also be a focus each session, including the opportunity to benefit from guest speakers and a focus upon wellbeing and embracing neurodiversity.

autism
west midlands

Light refreshments will be provided, and a member of Autism West Midlands will be present to offer support, advice and guidance.

Thursdays 10am - 12pm
12th December
9th January
13th February
13th March

The Hub Hazelwell
318 Vicarage Road Birmingham B14 7NH



Games Event

 **Maypole Youth Centre**

 **Saturday 14th December | 1pm - 3pm**

RAFFLE PRIZES!

Calling all dads / male carers and their children with additional needs - come and join us to take part in fun games and chat with friendly professionals about SEND, Early Help and access support!

We will be joined by Open Theatre, SENAIID, Ethereal Youth and many more. Light refreshments and fun games -

FREE!



BIRMINGHAM CHILDREN & YOUNG PEOPLE'S PARTNERSHIP



Green Square Accord



Hall Green Families

Selly Oak Families