

# NEWSLETTER



13<sup>th</sup> February 2026

The Woodhouse Support Hub

<https://sites.google.com/woodhouse.academy/support/home>

## How to get in touch



@WoodhousePA



0121 464 1769



[whp.greenheartlearning.org](http://whp.greenheartlearning.org)



[enquiries@whp.greenheartlearning.org](mailto:enquiries@whp.greenheartlearning.org)



[families@whp.greenheartlearning.org](mailto:families@whp.greenheartlearning.org)

- Use this for any queries. Monitored by the Inclusion Team
- You can also send us anything you'd like put in the newsletter. This can be photos, learning, resources and any good news stories you may have.



[sensupport@whp.greenheartlearning.org](mailto:sensupport@whp.greenheartlearning.org)

- Use this for any queries about any additional learning needs or concerns.

## New Breakfast Club

You may have heard on the news or read on social media that the Department for Education has been rolling out free breakfast clubs to all children in state funded schools who are in years Reception to Year 6. Following an early adopter phase, an additional 1,250 schools are joining the programme after the Easter holidays.



Some of the schools in Greenheart Learning Partnership have been selected to take part and I am delighted to say that Woodhouse Primary Academy is one of them. We plan to start the club when we return after Easter.

Please see Mr Parslow's end of week email with the full letter and sample menu.

To aid us with the next steps in planning the club, we would be grateful if you could take a moment to complete this short questionnaire. If you indicate you are interested, there is no obligation, it is simply to help us with planning.

<https://forms.office.com/e/f4YF3kzaf6>

# Stars of the Week

The following children are Stars of the Week for the week ending 13<sup>th</sup> February.

## Reception

Kyro  
Kayne  
Arezo

## Year One

Victoria  
Jaeden  
Meghan  
Kiana

## Year Two

Ronnie  
Mia  
Lewis  
Evelyn

## Year Three

Salma  
Furkan  
Raha  
Poppy

## Year Four

Beatrice  
All of 4RN  
Beau  
Nuri

Gabriel  
Skylah  
Damian  
Harrison

## Year Five

Harriet  
Louie  
Stephen  
Zachary

## Year Six

Isabelle  
Violet C  
Seela  
Jaxon

Noah in Year 4 was trainer of the week at his new Saturday football team. Good job Noah!

Eldana in Year 3 was student of the month at her Karate class. Well done Eldana!



Many of you go to clubs and take part in activities outside school. Share your achievements with us them with us in assembly on a Friday and have them posted in the newsletter.

# attendance MATTERS


**2<sup>nd</sup> – 6<sup>th</sup> February**

Whole School Attendance for the year currently running at: 94.43%

Last week's attendance:

EYFS & KS1: **94.05%**      KS2: **95%**      Whole School: **94.68%**

Our Attendance target for this coming year is 97%

Class	Attendance for the week	Class	Attendance for the week
Nursery	88.26%	<b>3A</b>	<b>97.86%</b> 
RB	92.41%	3H	97.24%
RD	94.67%	4H	96.90%
<b>1B</b>	<b>96.92%</b>	4RN	94.84%
1O	94.67%	5H	90.71%
2H	89.66%	5FP	94.14%
2P	95.33%	6D	92.96%
RR	92.78%	6WO	96.33%



Congratulations to **3A** who had the best class attendance last week.

Well done to **1B** who had the best class attendance in EYFS & KS1 last week.

Will you help your class have the best class attendance?

## **Academic Year 2025 – 2026**



**Friday 13<sup>th</sup> February – Last day of half term**

**Monday 16<sup>th</sup> – Friday 20<sup>th</sup> February – Half Term Break**

**Monday 23<sup>rd</sup> February – First day back for all children**

Thursday 5<sup>th</sup> March – World Book Day

– Dress as your favourite book character

Check out the low cost dressing up pack here:

<https://sites.google.com/woodhouse.academy/support/wbd-2026>

Wednesday 11<sup>th</sup> March – Parents Evening 3:30 – 6pm – Bookings live on MCAS between 8am on 25/2/26 and 3:30pm on 10/3/26.

Wednesday 18<sup>th</sup> March – Parents Evening 3:30 – 6pm – Bookings live on MCAS between 8am on 25/2/26 and 3:30pm on 17/3/26.

Wednesday 25<sup>th</sup> March – Year One Lego Discovery visit – Payments via MCAS

**Friday 27<sup>th</sup> March – Last day of Spring term**

**Monday 30<sup>th</sup> March – Friday 10<sup>th</sup> April – Easter Holidays**

**Monday 13<sup>th</sup> April – INSET Day – School Closed to all children**

**Tuesday 14<sup>th</sup> April – First day of Summer term for all children**

**Friday 22<sup>nd</sup> May – Last day of half term**

**Monday 25<sup>th</sup> – Friday 29<sup>th</sup> May – Half Term Break**

**Monday 1<sup>st</sup> June – First day back for all children**

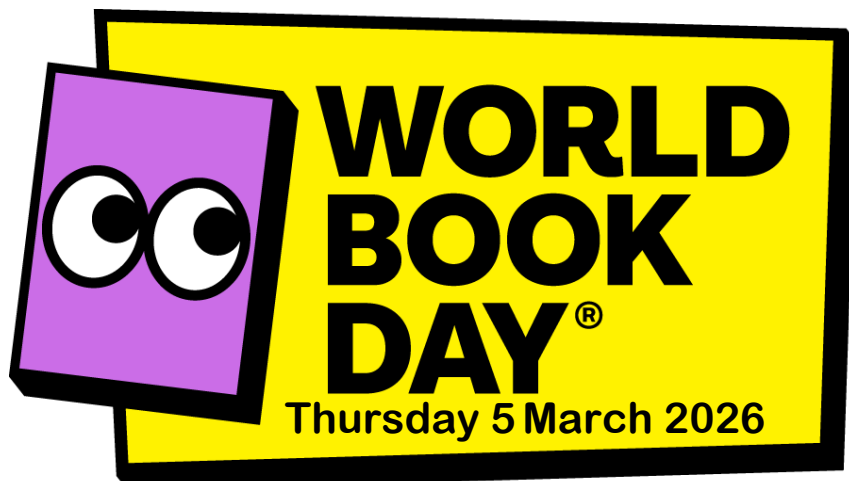
Tuesday 2<sup>nd</sup> June – Children's University Graduation

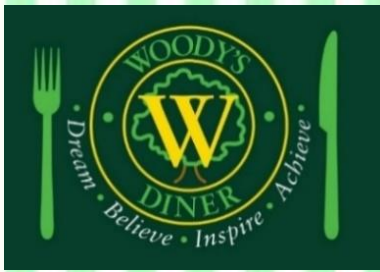
Thursday 25<sup>th</sup> June – Parent Forum – 9:15 – 10:30

Thursday 2<sup>nd</sup> July – Birmingham School Athletics Championships

**Friday 17<sup>th</sup> July – Last day of Summer term**

**Monday 20<sup>th</sup> July – INSET Day – School Closed to all children**





# School Dinner Menu

## 23<sup>rd</sup> – 27<sup>th</sup> February

**NOTE: We operate a 3-week rolling menu. Keep an eye on the menu each week for changes.**

**We use a range of suppliers, including local businesses so menus are subject to change if items are unavailable. We will update you of any major changes.**

Monday	Tuesday	Wednesday	Thursday	Friday
Chicken Nuggets  Vegan Sausage Roll  Herby Diced Potatoes  Baked Beans or Vegetables	Fish Star, Salmon Fishcake or Vegetable Fingers  New or Mashed Potatoes  Peas and Sweetcorn  Sweet Chilli or Parsley Sauce	BBQ Chicken or BBQ Quorn  Savoury Rice  Mixed Vegetables	Beef Spaghetti Bolognese  Tomato and Basil Pasta  Jacket Potato with Cheese, Beans or Tuna  Garlic Bread and Salad	<b>Pizza Day</b>
				Cheese and Tomato, Pepperoni or BBQ Beef  Roast Chicken  Chips and Baked Beans or Vegetables
Arctic Roll	Jam Sponge	Rice Pudding with Jam or Raisins	Eves Pudding and Custard	Fruity Friday Fruit Pots
Fresh Fruit, Fresh Bread and Fresh Salad Bar available daily				

## Food Allergies

In order to keep our dietary records up to date, please inform the main office of any changes to your child's dietary requirements, allergies and intolerances. We are able to cater for most requirements but must know in advance.

If your child only eats Halal meats but can eat fish, please also let the main office know. We do not serve Halal meats.

Please either contact the main office on 0121 464 1769 or email us on [families@whp.greenheartlearning.org](mailto:families@whp.greenheartlearning.org)

**Please also remember that we are a NUT FREE SCHOOL**

# 20 is plenty!

Children who read for **20 minutes** a day will...

Improve  
**focus and  
concentration**

Have a world of  
**imagination and  
creativity**  
opened to them

Have  
**stronger  
writing skills**

Improve and  
**strengthen  
memory**

Be exposed to  
**1.8 million  
words a year**

Have a  
**broad  
vocabulary**

Improve  
**test results**

Improve  
**communication  
skills**

Encourage  
**a love for  
learning**

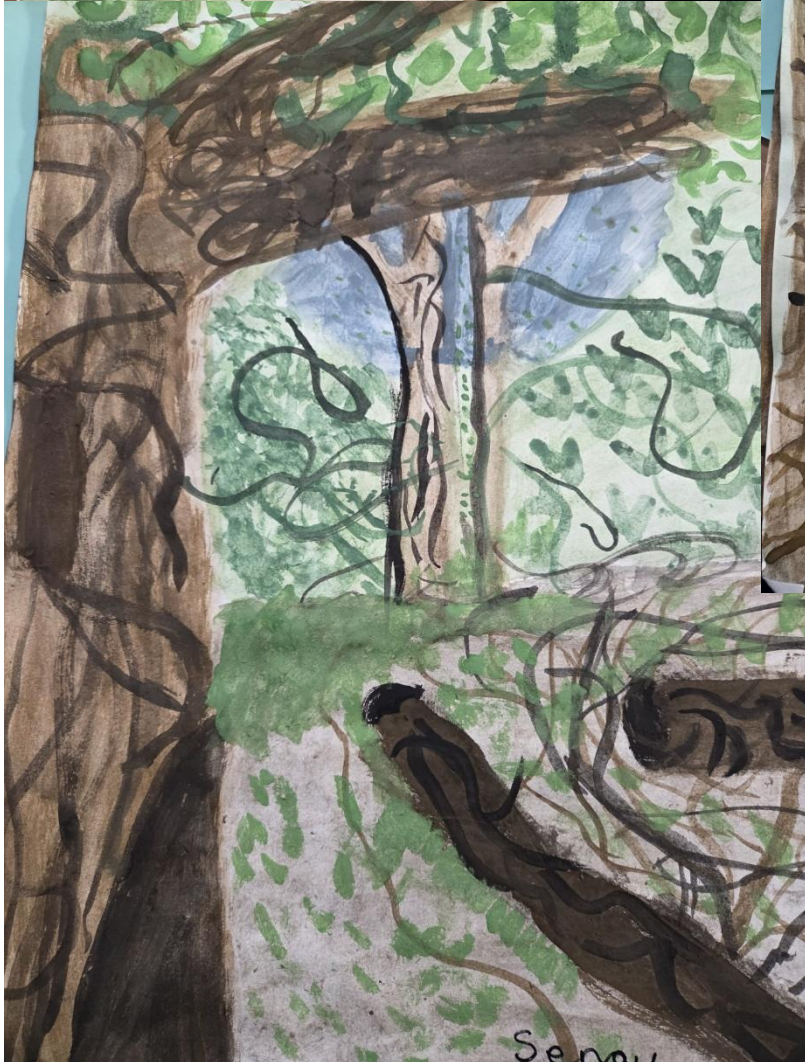
Learn how to  
**develop  
empathy**

Improve  
**critical  
thinking skills**

Have  
**reduced  
stress levels**



Children in Year 5 have been using watercolour paints to produce these amazingly detailed landscapes of Pitts Wood.



The  
ART  
Corner



# WOODHOUSE PRE-LOVED ESSENTIALS

We have a wide range of pre-loved uniform and non-school uniform items free of charge to those who need them. You are more than welcome to come and help yourself anytime.

We also have shoes, trainers, coats, hats, gloves, scarves and bags available.

Further items available but not out. Please ask at the main office.



## Fair usage

Please only take what you need and leave it ready for the next person

## Help with Laundry

Thanks to a company called Smol and their Suds in Schools project, we also have washing and drying facilities within school for families who are struggling with this where we can offer a discrete laundry service.



If this is of any help to anyone, please speak with Mr Kennedy.

# Household Support

We are also able to access support for a wide range of household items such as white goods, beds, bedding etc.

Please speak with Mr Kennedy, the office staff or email us at [families@whp.greenheartlearning.org](mailto:families@whp.greenheartlearning.org) if you need support with any of this.



**Are you a permanent resident of Harborne, Quinton or Smethwick?**

**Are you struggling due to a restricted income or crisis?**

If so, Harborne Parish Lands Charity (HPLC) may be able to help provide you with essential items for your home such as white goods, beds, bedroom storage, or a whole host of support. This list isn't exhaustive but unfortunately, we cannot provide cash or debt relief or help with bills.

HPLC is a friendly local charity. Our mission is to help people who are in need and who live within the 'Ancient Parish of Harborne' (which even includes a large area of Smethwick)

Each case is always looked at on an individual basis and applications are always followed up with a home visit.

For an informal chat about your circumstances, please contact a member of staff at reception, or in the office, or one of our Support Officers.

## BABY BANK



There is a wonderful baby bank available that is run by Helen, a member of the Woodhouse community. They are able to support new and expecting mothers with a wide range of items.

If you would like to access this support, you can call or email using the details below:

**Helen** 07811070518 [Helen.childcare@gmail.com](mailto:Helen.childcare@gmail.com)





**\*30%  
DISCOUNT  
UNTIL  
JAN 25TH**

**Ofsted**  
Registered

# FEBRUARY HOLIDAY CLUBS

**HARBORNE ACADEMY, B15 3JL**

**MONDAY 16<sup>TH</sup> - FRIDAY 20<sup>TH</sup> FEBRUARY 2026**

**\*£18.84 9AM-4PM (5-11 YEAR OLDS)**

**£14 9AM-1PM (4 YEAR OLDS)**

**20% DISCOUNT 26TH JAN - 8TH FEB £21.54**

**FINAL PRICE £24.50**

**SCAN THE QR CODE OR VISIT**

**[WWW.PREMIER-EDUCATION.COM/HOLIDAY/CAMPS](http://WWW.PREMIER-EDUCATION.COM/HOLIDAY/CAMPS)**



**BOOK  
TODAY**



**\*30%  
DISCOUNT  
UNTIL  
JAN 25TH**



**Ofsted**  
Registered



# FOOTBALL HOLIDAY CLUBS

**HARBORNE ACADEMY, B15 3JL**

**WEDNESDAY 18TH - FRIDAY 20TH FEBRUARY**

**\*£18.84 9AM-4PM (5-11 YEAR OLDS)**

**£14 9AM-1PM (4 YEAR OLDS)**

**20% DISCOUNT 26TH JAN - 8TH FEB £21.54**

**FINAL PRICE £24.50**

**SCAN THE QR CODE OR VISIT  
WWW.PREMIER-EDUCATION.COM/HOLIDAY/CAMPS**



**BOOK  
TODAY**

 **Premier**  
Education

**Excellent**  
  
★ Trustpilot



**\*30%  
DISCOUNT  
UNTIL  
JAN 25TH**

# PERFORMING ARTS HOLIDAY CLUBS

**HARBORNE ACADEMY, B15 3JL**

**MONDAY 16TH - TUESDAY 17TH FEBRUARY**

**\*£18.84 9AM-4PM (5-11 YEAR OLDS)**

**£14 9AM-1PM (4 YEAR OLDS)**

**20% DISCOUNT 26TH JAN - 8TH FEB £21.54**

**FINAL PRICE £24.50**

**SCAN THE QR CODE OR VISIT  
WWW.PREMIER-EDUCATION.COM/HOLIDAY/CAMPS**



**BOOK  
TODAY**



**Premier  
Education**

**Ofsted**  
Registered

**Excellent**  
★★★★★  
★ Trustpilot



# OLDBURY

## 1 DAY INDOOR CAMP



**ONLY £25**

IF YOU BOOK BY  
**31st JAN**



**OLDBURY ACADEMY**

Pound Road, Oldbury, B68 8NE



MONDAY **16<sup>th</sup>** FEBRUARY **2026**



**10:00am - 3:00pm**

**[soccerstarcoaching.co.uk](http://soccerstarcoaching.co.uk)**

## WHAT CAN THE KIDS EXPECT?

- ⚽ Fun football related games
- ⚽ Tournament
- ⚽ Friendly Coaches
- ⚽ Meet New Friends
- ⚽ Player Of The Day Award
- ⚽ Skill Points winner



## LUNCH

Children need to bring a packed lunch from home, along with plenty of drinks!

## PARENTS & CARERS

Following the huge success of our Camps over the last 20 years, we have organised a 1 Day Soccer Camp for all children between School Year 2 - Year 6.

The camp will run for 1 day from 10:00am - 3:00pm. We cater for children of all abilities, ranging from the complete beginner to the more advanced player.

The camp is tightly structured with the children fully supervised at all times, as the camp is run by our professional **qualified F.A. coaches**. All **coaches are DBS checked** and currently work with children on a daily basis, enabling players to learn essential football techniques, together with a "fun" element.

## EVERY CHILD RECEIVES A:

- ⚽ **MEDAL**
- ⚽ **CERTIFICATE**
- ⚽ **FREE TICKET TO**



## PRICING TABLE



**EARLY BIRD DISCOUNT**

**IF YOU BOOK BY 31st JAN**

**ONLINE PRICE**

after 31st Jan 2026

**FULL PRICE**  
TELEPHONE BOOKING /  
PAY ON THE DAY

## STANDARD

Non-Refundable

SAVE £15

**£25**

CHEAPEST

SAVE £10

**£30**

**£40**



## Scan me

to book a place or for more info!

Pay later with  
**Klarna.**



★ Trustpilot  
★★★★★

Rated 4.9/5

510 Reviews

# CLUB SENSATION



A chance for SEND young people and their families/carers to relax and socialise during a fab night of DJ Mixes and Dancing!  
Suitable for ages 10+ and their families (siblings of all ages welcome).

Pay what you choose  
Wed 18 February, 2pm - 4pm  
Midlands Arts Centre, Theatre

Book here



macbirmingham.co.uk | 0121 446 3232  
macmakesmusic@macbirmingham.co.uk