

NEWSLETTER



6th March 2026

The Woodhouse Support Hub

<https://sites.google.com/woodhouse.academy/support/home>

How to get in touch



@WoodhousePA



0121 464 1769



whp.greenheartlearning.org



enquiries@whp.greenheartlearning.org



families@whp.greenheartlearning.org

- Use this for any queries. Monitored by the Inclusion Team
- You can also send us anything you'd like put in the newsletter. This can be photos, learning, resources and any good news stories you may have.



sensupport@whp.greenheartlearning.org

- Use this for any queries about any additional learning needs or concerns.

New Breakfast Club

You may have heard on the news or read on social media that the Department for Education has been rolling out free breakfast clubs to all children in state funded schools who are in years Reception to Year 6. Following an early adopter phase, an additional 1,250 schools are joining the programme after the Easter holidays.



Some of the schools in Greenheart Learning Partnership have been selected to take part and I am delighted to say that Woodhouse Primary Academy is one of them. We plan to start the club when we return after Easter.

Please see Mr Parslow's end of week email with the full letter and sample menu.

To aid us with the next steps in planning the club, we would be grateful if you could take a moment to complete this short questionnaire. If you indicate you are interested, there is no obligation, it is simply to help us with planning.

<https://forms.office.com/e/f4YF3kzaf6>

Stars of the Week

The following children are Stars of the Week for the week ending 6th March.

Reception

Miraj
Charlie
Kingsley
Jacob

Year Three

Sanudaka
Shaunak
Arlo
Yui

Year One

Ahmad
Yousuf
Florence
Edward

Year Four

Sammy
Ahmad
Gabi
Alfie

Year Six

Violet S
Anaia
Adam Jnr
Raheel

Year Two

Nora
Logan
Kylan
Talia

Year Five

Jardai
Ellie
Leo
Brodie



Myles in Reception has won two football awards over the weekend. Well done Myles!



Many of you go to clubs and take part in activities outside school. Share your achievements with us them with us in assembly on a Friday and have them posted in the newsletter.

attendance **MATTERS**



23rd – 27th February

Whole School Attendance for the year currently running at: 94.35%

Last week's attendance:

EYFS & KS1: **95.45%** KS2: **95.12%** Whole School: **95.23%**

Our Attendance target for this coming year is 97%

Class	Attendance for the week		Class	Attendance for the week
Nursery	92.77%		3A	95%
RB	98.62% 		3H	98.62% 
RD	92%		4H	94.48%
1B	69.54%		4RN	93.55%
1O	98%		5H	92.86%
2H	93.45%		5FP	96.55%
2P	95.33%		6D	97.04%
RR	92.78%		6WO	93.33%



Congratulations to **Bumblebees** and **3H** who both had the best class attendance last week.

Will you help your class have the best class attendance?

Academic Year 2025 – 2026



Wednesday 11th March – Parents Evening 3:30 – 6pm – Bookings live on MCAS between 8am on 25/2/26 and 3:30pm on 10/3/26.

Wednesday 18th March – Parents Evening 3:30 – 6pm – Bookings live on MCAS between 8am on 25/2/26 and 3:30pm on 17/3/26.

Wednesday 25th March – Year One Lego Discovery visit
– Payments via MCAS

Thursday 26th March – 4H and Elective Violin performance

Friday 27th March – Last day of Spring term

Monday 30th March – Friday 10th April – Easter Holidays

Monday 13th April – INSET Day – School Closed to all children

Tuesday 14th April – First day of Summer term for all children

Wednesday 15th April – Year 2 visit to Botanical Gardens – Payments via MCAS

Friday 22nd May – Last day of half term

Monday 25th – Friday 29th May – Half Term Break

Monday 1st June – First day back for all children

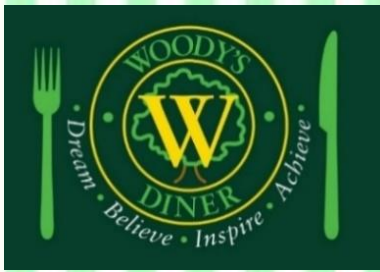
Tuesday 2nd June – Children’s University Graduation

Thursday 25th June – Parent Forum – 9:15 – 10:30

Thursday 2nd July – Birmingham School Athletics Championships

Friday 17th July – Last day of Summer term

Monday 20th July – INSET Day – School Closed to all children



School Dinner Menu

9th – 13th March

NOTE: We operate a 3-week rolling menu. Keep an eye on the menu each week for changes.

We use a range of suppliers, including local businesses so menus are subject to change if items are unavailable. We will update you of any major changes.

Monday	Tuesday	Wednesday	Thursday	Friday
Pork Sausages Vegan Sausage Rolls Mashed Potatoes Mixed Vegetables and Gravy	Fish Star, Salmon Fish Cakes or Vegetable Ravioli	Italian Style Chicken or Quorn Pasta Fresh Chopped Salad	Beef Chilli or Vegetable Fingers with Rice and Nachos	Pizza Day Cheese and Tomato, Pepperoni or BBQ Beef
	New Potatoes or Savoury Rice		Jacket Potato with a Selection of Fillings: Baked Beans, Cheese, BBQ Beef, Coleslaw or Tuna Mayo	Roast Chicken
	Peas and Sweetcorn		Chips and Baked Beans or Vegetables	
	Sweet Chili or Parsley Sauce		Baked Beans or Vegetables	
Ice Cream	Apple Crumble and Custard	Iced Lemon Sponge	Chocolate Concrete and Custard	Fruity Friday Fruit Pots
Fresh Fruit, Fresh Bread and Fresh Salad Bar available daily				

Food Allergies

In order to keep our dietary records up to date, please inform the main office of any changes to your child's dietary requirements, allergies and intolerances. We are able to cater for most requirements but must know in advance.

If your child only eats Halal meats but can eat fish, please also let the main office know. We do not serve Halal meats.

Please either contact the main office on 0121 464 1769 or email us on families@whp.greenheartlearning.org

Please also remember that we are a NUT FREE SCHOOL

20 is plenty!

Children who read for **20 minutes** a day will...

Improve
**focus and
concentration**

Have a world of
**imagination and
creativity**
opened to them

Have
**stronger
writing skills**

Improve and
**strengthen
memory**

Be exposed to
**1.8 million
words a year**

Have a
**broad
vocabulary**

Improve
test results


Improve
**communication
skills**

Encourage
**a love for
learning**

Learn how to
**develop
empathy**

Improve
**critical
thinking skills**

Have
**reduced
stress levels**



Reading at Home With Your Child

Build

Build reading together into your daily routine.

Predict

Ask your child to **predict** what they think is going to happen next.

Find

Find a quiet, comfortable place to read together away from any distractions.

Recap

If it is the same book, ask your child to **recap** what has happened so far.

Start

If it is a new book, start by looking at the cover, title, pictures and blurb.

Discuss

Discuss and research the meaning of any unfamiliar words or phrases.

Allow

If your child mispronounces a word, do not interrupt. **Allow** them time to self-correct.

Check

Check their understanding of the book. Ask questions - Why..? How..? Who..? When..? Where..? What..?

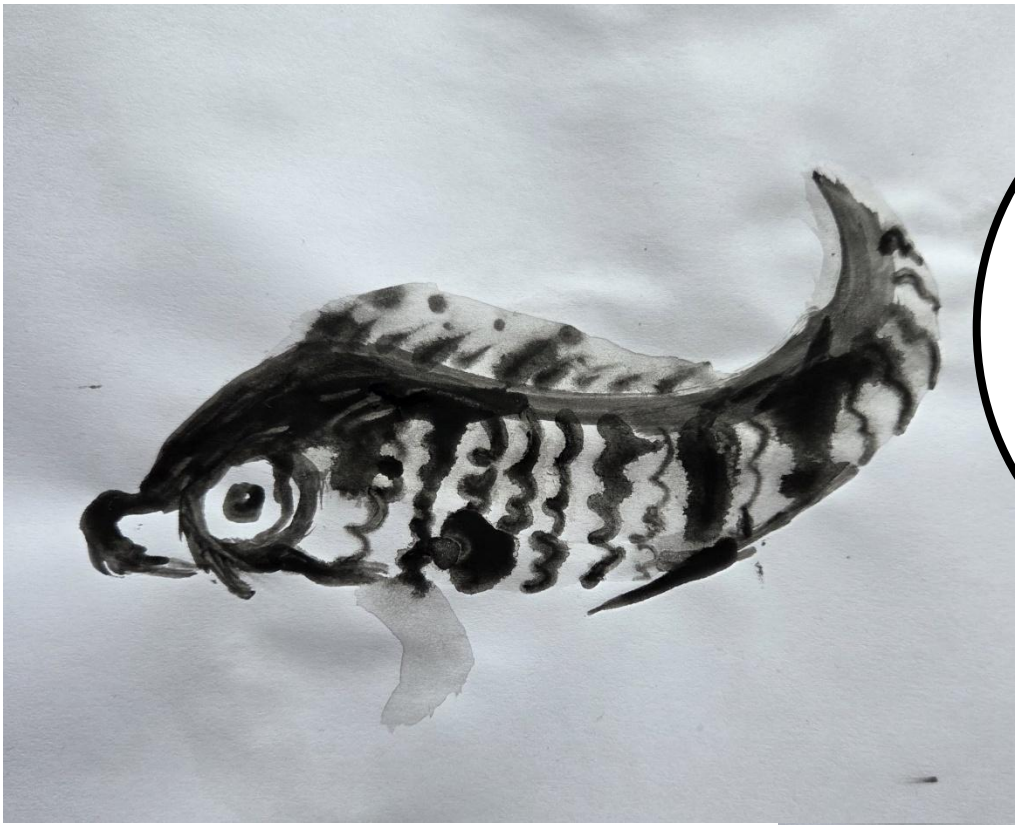
Connect

Try to **connect** the story to your child's own world.

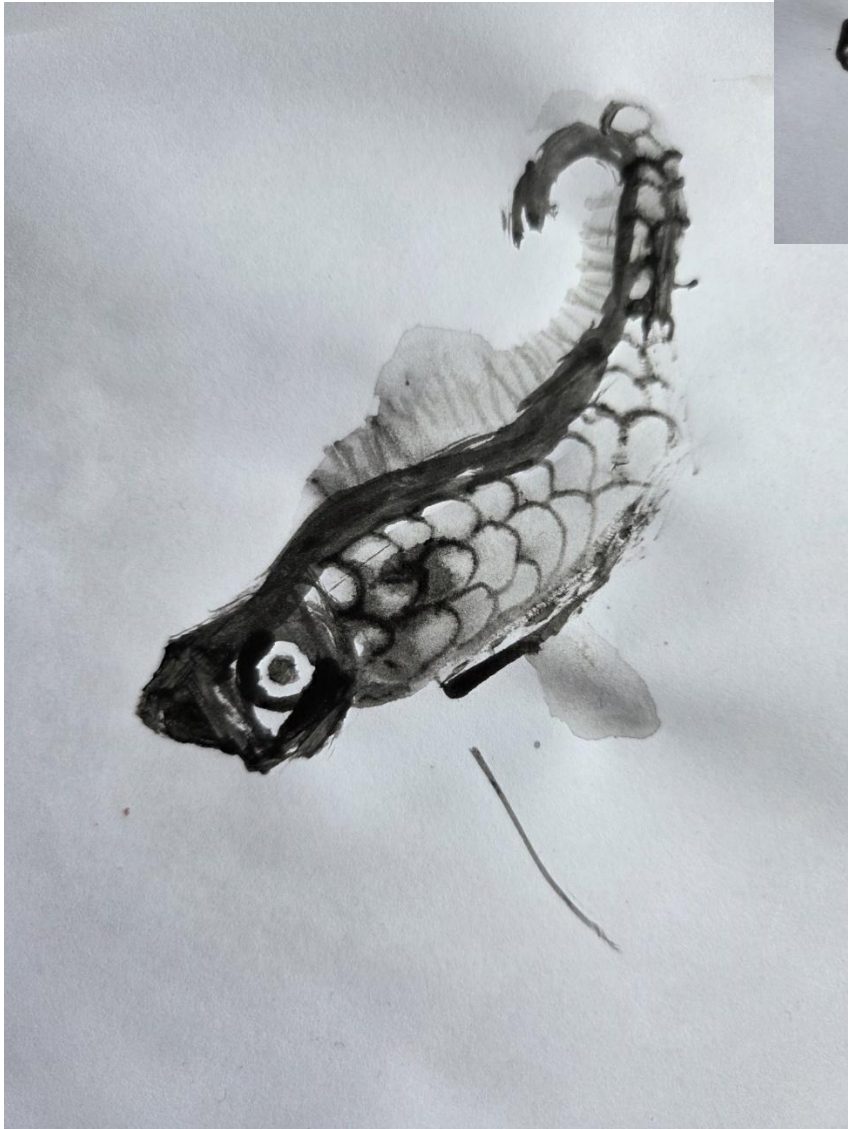
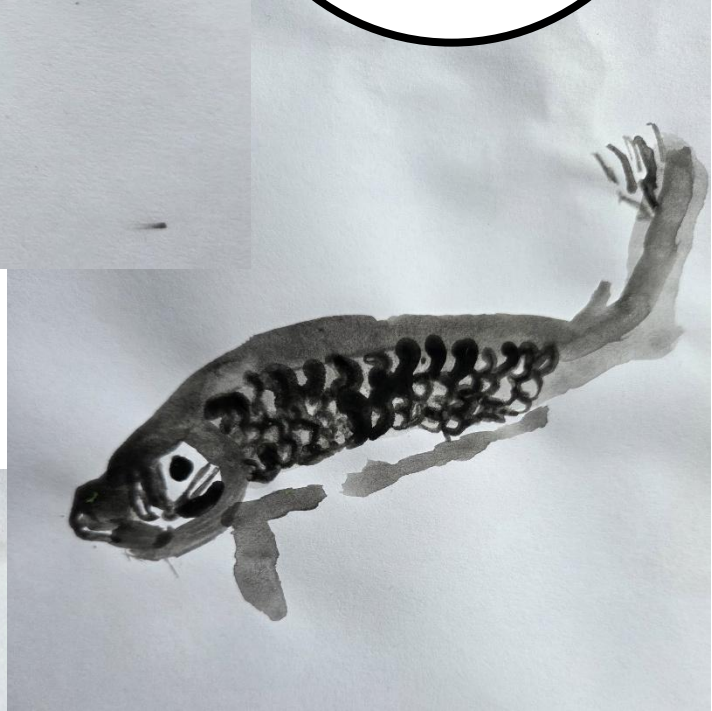
Ask

Ask about their opinion of the book. Discuss story, style likes and dislikes.





Year 4 tried Chinese brush painting. Here are just some of the amazing results.



The
ARTS
Corner

The



Corner



Children in Year 3 planned and made Ancient Egyptian Tomb Paintings.



EASTER FUN

Thursday 26th March



Easter bonnet parade – 3pm

Children will decorate a bonnet at home with the theme of Easter.

Please come and support by watching the parade!

Decorate an egg competition

Decorate an egg or an egg scene at home and bring them to the office.

The best one wins a prize!

Design Technology Egg Mobile Competition for years 3-6

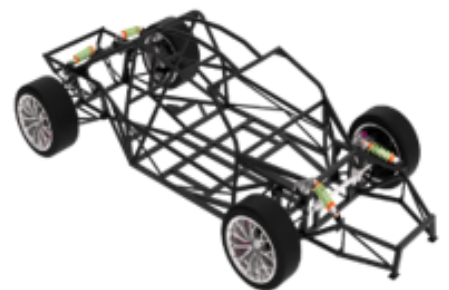
Date: Wednesday 25th March 2026

Design and make your own vehicle that will carry a boiled egg. This must be a homemade vehicle with wheels and no wider than 30 cm. You may use construction kits or Lego. Be aware that Lego does not always stay together.

There will a winner in each year group and a prize for the best design.

Please bring your vehicle to school on Wednesday 25th March with your boiled egg.

Good Luck!





WOODHOUSE PRE-LOVED ESSENTIALS

We have a wide range of pre-loved uniform and non-school uniform items free of charge to those who need them. You are more than welcome to come and help yourself anytime.

We also have shoes, trainers, coats, hats, gloves, scarves and bags available.

Further items available but not out. Please ask at the main office.



Fair usage

Please only take what you need and leave it ready for the next person

Help with Laundry

Thanks to a company called Smol and their Suds in Schools project, we also have washing and drying facilities within school for families who are struggling with this where we can offer a discrete laundry service.



If this is of any help to anyone, please speak with Mr Kennedy.

Household Support

We are also able to access support for a wide range of household items such as white goods, beds, bedding etc.

Please speak with Mr Kennedy, the office staff or email us at families@whp.greenheartlearning.org if you need support with any of this.



Are you a permanent resident of Harborne, Quinton or Smethwick?

Are you struggling due to a restricted income or crisis?

If so, Harborne Parish Lands Charity (HPLC) may be able to help provide you with essential items for your home such as white goods, beds, bedroom storage, or a whole host of support. This list isn't exhaustive but unfortunately, we cannot provide cash or debt relief or help with bills.

HPLC is a friendly local charity. Our mission is to help people who are in need and who live within the 'Ancient Parish of Harborne' (which even includes a large area of Smethwick)

Each case is always looked at on an individual basis and applications are always followed up with a home visit.

For an informal chat about your circumstances, please contact a member of staff at reception, or in the office, or one of our Support Officers.

BABY BANK



There is a wonderful baby bank available that is run by Helen, a member of the Woodhouse community. They are able to support new and expecting mothers with a wide range of items.

If you would like to access this support, you can call or email using the details below:

Helen 07811070518 Helen.childcare@gmail.com



Warming Hearts in the Winter Chill: Festive Gift Delivery for Birmingham NICU

BIRMINGHAM — As a biting winter chill settled over the city this December, **Cycling for Humanity** and the staff of **Woodhouse Primary Academy** braved the freezing temperatures to bring a glow of festive warmth to the **Birmingham Women's Hospital**.

In a joint effort to spread holiday cheer during the Christmas period, the two organisations delivered a collection of specially curated "starter packs" to the Neonatal Intensive Care Unit (NICU). Against the backdrop of frosty mornings, the initiative was driven by a shared commitment to supporting families and frontline healthcare staff caring for premature and critically ill babies.

Handmade with Love: The Starter Packs

These packs were filled with essential items designed to provide comfort and practical support for the hospital's tiniest patients. The donation was a true community effort:

- **Annette and her knitting club** spent weeks hand-knitting beautiful blankets and cardigans to keep the babies warm against the winter cold.
- **Sarah Wright** contributed a collection of delicate, hand-crocheted hats.
- **Woodhouse Academy** provided vital items including bonding cloths, rattles, baby grows, and vests.

These donated presents are intended to provide a sense of comfort and encouragement to families during what can be an incredibly challenging and emotional time.



A Mother's Perspective on the NICU Journey

For families spending their Christmas in the NICU, the season can feel overwhelming. Kuli Chana, a mother whose son Gurpreet is now a healthy eight year old, knows this reality all too well. She described the experience as entering a world where ordinary rules of time, certainty, and control simply don't apply. Instead of the joyful blur of newborn days, parents enter a landscape of monitors and medical terminology where hope is measured in ounces and hours.

Her journey was made even more difficult when her baby faced Necrotising Enterocolitis (NEC), a serious condition involving intestinal damage. "I remember the terror of not knowing what would happen, the helplessness of standing beside an incubator while my baby fought a condition I could not see and could not fix," Kuli recalled. She noted that while love can be "fierce and frightening" at the same time, it is the quiet, exhausted strength of touching a tiny hand through a porthole that sustains a parent.

Kuli shared how NEC tested her in ways she never expected, changing the way she understands what it means to mother a child. "There were days when I held my breath more than my child," she explained, describing the nights when the quiet of the NICU felt "unbearably loud". Yet, even in the uncertainty, she found miracles in stable vital signs and successful procedures, eventually believing they could come out the other side. Her son, Gurpreet, remains a testament to that extraordinary strength and survival.



Making a Meaningful Difference

Representatives from both Cycling for Humanity and Woodhouse Primary Academy worked together to organise the delivery, highlighting the positive impact that community collaboration can have on local healthcare services.

A spokesperson for Cycling for Humanity, reflecting on the importance of the Yuletide delivery, said:

"We are incredibly proud to work alongside Woodhouse Primary Academy to support Birmingham Women's Hospital. This small gesture represents our wider commitment to compassion, community, and making a meaningful difference where it's most needed."

The donation was met with deep appreciation from the hospital team. Staff at the NICU expressed their gratitude for the donation, noting the importance of community support in enhancing patient and family wellbeing during the festive period.

Lessons in Generosity

For Woodhouse Primary Academy, this Christmas project provided a real-world lesson for its pupils. The school remains committed to instilling values of generosity and social responsibility among its students, showing them how a small act of kindness can brighten a difficult time for families facing uncertainty.

As Kuli Chana noted, the prayers of friends and family from all over the world provide the strength to fight when things look bleak. Despite the freezing temperatures outside, this partnership has ensured that the families at Birmingham Women's Hospital feel the full warmth of their community's support.



***30%
DISCOUNT
AVAILABLE
UNTIL
1ST MARCH**



Ofsted
Registered

EASTER

HOLIDAY CLUBS

HARBORNE ACADEMY, HARBORNE RD, B15 3JL

**MONDAY 30TH MARCH - THURSDAY 2ND APRIL
TUESDAY 7TH - FRIDAY 10TH APRIL**

***£18.83 9AM-4PM (5-11 YEAR OLDS)
£14.00 9AM-1PM (4 YEAR OLDS)
£21.54 (20% DISCOUNT) 2ND - 15TH MARCH
£24.50 (STANDARD PRICE)**

**SCAN THE QR CODE OR VISIT
WWW.PREMIER-EDUCATION.COM/HOLIDAY-CAMPS**



 **Premier**
Education

 **Trustpilot**

Based on 20,000 reviews