

NEWSLETTER



27th March 2026

The Woodhouse Support Hub

<https://sites.google.com/woodhouse.academy/support/home>

How to get in touch



@WoodhousePA



0121 464 1769



whp.greenheartlearning.org



enquiries@whp.greenheartlearning.org



families@whp.greenheartlearning.org

- Use this for any queries. Monitored by the Inclusion Team
- You can also send us anything you'd like put in the newsletter. This can be photos, learning, resources and any good news stories you may have.



sensupport@whp.greenheartlearning.org

- Use this for any queries about any additional learning needs or concerns.

Free Breakfast Club

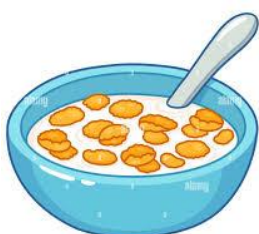
On Tuesday 14th April, the first day back after Easter, we will be starting up our new free breakfast club, funded by the Government.

The club will run from 8:15 – 8:35am and is open to all children in Years Reception to Year 6.

The club is totally free but we ask you to book your child/ren in on MCAS so we know how many to expect. If you have any difficulties with MCAS, please see someone in the main office.

For further details on this and the impact on BASC, please see the letter from Mr Parslow sent out this week. You can also read it here:

<https://sites.google.com/woodhouse.academy/support/free-breakfast-club>



Stars of the Week

There was no praise assembly this week due to Easter assemblies but we still have some superstars!

Many of you take part in clubs, competitions and activities outside school. If you would like pictures of your successes on the newsletter, send them through to us or ask the class teacher.



Akira and Vira in Reception and achieved their level 4 badge in their gymnastics academy class.

Excellent job girls, well done!

attendance ~~MATTERS~~


16th – 20th March

Whole School Attendance for the year currently running at: 94.32%

Last week's attendance:

EYFS & KS1: **89.90%** KS2: **92.14%** Whole School: **91.39%**

Our Attendance target for this coming year is 97%

Class	Attendance for the week	Class	Attendance for the week
Nursery	84.89%	3A	91.85%
RB	89.31%	3H	93.10%
RD	86.67%	4H	96.21% 
1B	93.70%	4RN	89.68%
1O	88.33%	5H	92.73%
2H	91.72%	5FP	91.72%
2P	85.91%	6D	88.89%
RR	91.67%	6WO	92.67%



Congratulations to **4H** who had the best overall class attendance and to **1B** who had the best class attendance in EYFS & KS1 last week.

Academic Year 2025 – 2026



Friday 27th March – Last day of Spring term

Monday 30th March – Friday 10th April – Easter Holidays

Monday 13th April – INSET Day – School Closed to all children

Tuesday 14th April – First day of Summer term for all children

Wednesday 15th April – Year 2 visit to Botanical Gardens – Payments via MCAS

Wednesday 15th April – Year 4 Brass Concert 09:30 – 10:00

Monday 11th – Thursday 14th May – Year 6 SATs week

Friday 22nd May – Last day of half term

Monday 25th – Friday 29th May – Half Term Break

Monday 1st June – First day back for all children

Tuesday 2nd June – Children’s University Graduation

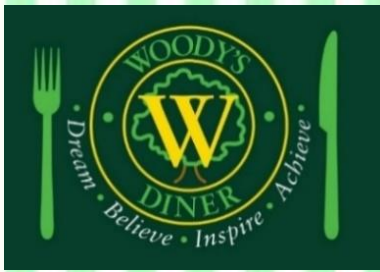
Thursday 25th June – Parent Forum – 9:15 – 10:30

Thursday 2nd July – Birmingham School Athletics Championships

Friday 17th July – Last day of Summer term

Monday 20th July – INSET Day – School Closed to all children





School Dinner Menu

14th – 17th April

NOTE: We operate a 3-week rolling menu. Keep an eye on the menu each week for changes.

We use a range of suppliers, including local businesses so menus are subject to change if items are unavailable. We will update you of any major changes.

Monday	Tuesday	Wednesday	Thursday	Friday
School Closed for INSET Day	Pork Sausages	Fish Star, Salmon Fish Cake or Vegetable Fingers	Jacket Potato with a Selection of Fillings:	Pizza Day
	Vegan Sausage Rolls	New Potatoes or Savoury Rice	Baked Beans, Cheese, BBQ Beef, Coleslaw or Tuna Mayo	Cheese and Tomato, Pepperoni or BBQ Beef
	Mashed Potatoes	Peas and Sweetcorn	Chopped Salad	Roast Chicken
	Mixed Vegetables and Gravy	Sweet Chili or Parsley Sauce		Chips and Baked Beans or Vegetables
	Ice Cream	Iced Lemon Sponge	Fresh Fruit Pots	Fruit Jelly
Fresh Fruit and Fresh Salad Bar available daily				

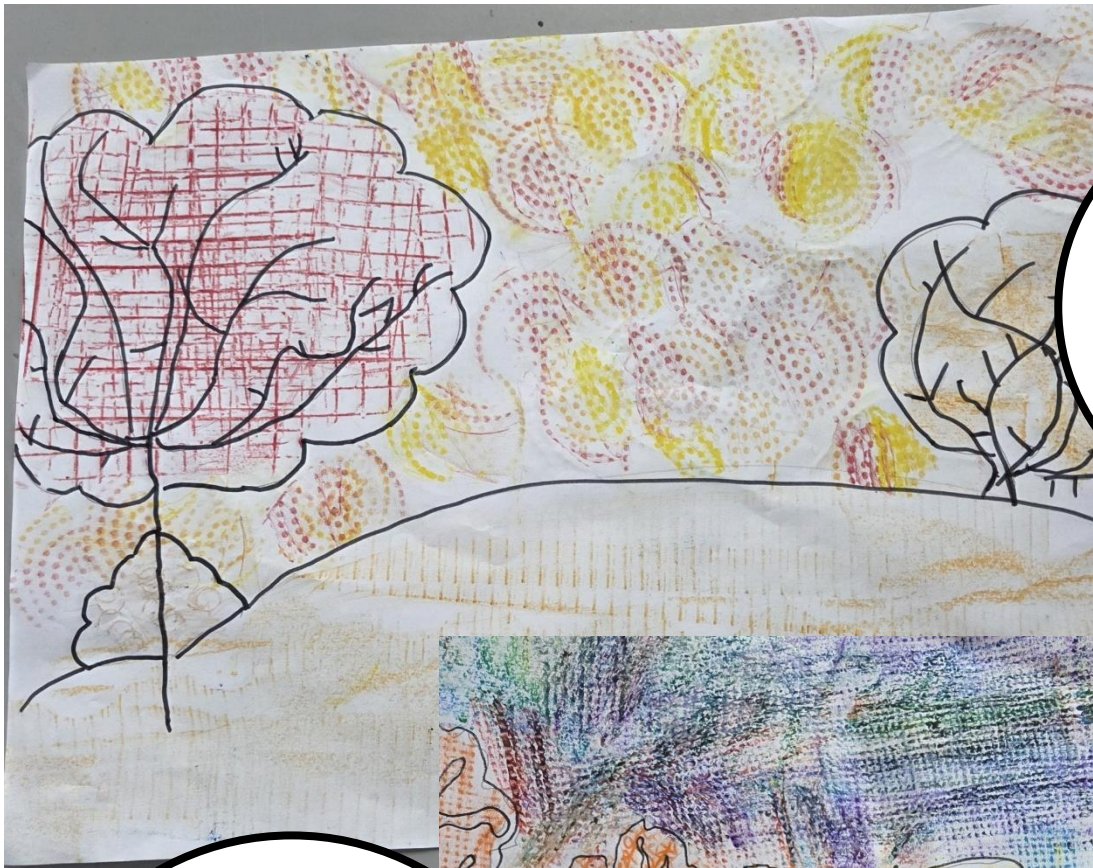
Food Allergies

In order to keep our dietary records up to date, please inform the main office of any changes to your child's dietary requirements, allergies and intolerances. We are able to cater for most requirements but must know in advance.

If your child only eats Halal meats but can eat fish, please also let the main office know. We do not serve Halal meats.

Please either contact the main office on 0121 464 1769 or email us on families@whp.greenheartlearning.org

Please also remember that we are a NUT AWARE SCHOOL



Textured
woodland
drawings by
Year 5

See more of our
fantastic art on our
website here:
<https://sites.google.com/woodhouse.academy/art-journal/home>



20 is plenty!

Children who read for **20 minutes** a day will...

Improve
**focus and
concentration**

Have a world of
**imagination and
creativity**
opened to them

Have
**stronger
writing skills**

Improve and
**strengthen
memory**

Be exposed to
**1.8 million
words a year**

Have a
**broad
vocabulary**

Improve
test results


Improve
**communication
skills**

Encourage
**a love for
learning**

Learn how to
**develop
empathy**

Improve
**critical
thinking skills**

Have
**reduced
stress levels**



Reading at Home With Your Child

Build

Build reading together into your daily routine.

Predict

Ask your child to **predict** what they think is going to happen next.

Find

Find a quiet, comfortable place to read together away from any distractions.

Recap

If it is the same book, ask your child to **recap** what has happened so far.

Start

If it is a new book, start by looking at the cover, title, pictures and blurb.

Discuss

Discuss and research the meaning of any unfamiliar words or phrases.

Allow

If your child mispronounces a word, do not interrupt. **Allow** them time to self-correct.

Check

Check their understanding of the book. Ask questions - Why..? How..? Who..? When..? Where..? What..?

Connect

Try to **connect** the story to your child's own world.

Ask

Ask about their opinion of the book. Discuss story, style likes and dislikes.





WOODHOUSE PRE-LOVED ESSENTIALS

We have a wide range of pre-loved uniform and non-school uniform items free of charge to those who need them. You are more than welcome to come and help yourself anytime.

We also have shoes, trainers, coats, hats, gloves, scarves and bags available.

Further items available but not out. Please ask at the main office.



Fair usage

Please only take what you need and leave it ready for the next person

Help with Laundry

Thanks to a company called Smol and their Suds in Schools project, we also have washing and drying facilities within school for families who are struggling with this where we can offer a discrete laundry service.



If this is of any help to anyone, please speak with Mr Kennedy.

Household Support

We are also able to access support for a wide range of household items such as white goods, beds, bedding etc.

Please speak with Mr Kennedy, the office staff or email us at families@whp.greenheartlearning.org if you need support with any of this.



Are you a permanent resident of Harborne, Quinton or Smethwick?

Are you struggling due to a restricted income or crisis?

If so, Harborne Parish Lands Charity (HPLC) may be able to help provide you with essential items for your home such as white goods, beds, bedroom storage, or a whole host of support. This list isn't exhaustive but unfortunately, we cannot provide cash or debt relief or help with bills.

HPLC is a friendly local charity. Our mission is to help people who are in need and who live within the 'Ancient Parish of Harborne' (which even includes a large area of Smethwick)

Each case is always looked at on an individual basis and applications are always followed up with a home visit.

For an informal chat about your circumstances, please contact a member of staff at reception, or in the office, or one of our Support Officers.

BABY BANK



There is a wonderful baby bank available that is run by Helen, a member of the Woodhouse community. They are able to support new and expecting mothers with a wide range of items.

If you would like to access this support, you can call or email using the details below:

Helen 07811070518 Helen.childcare@gmail.com



Sporty Stars



SPORTS CAMP

Woodhouse Rd, Quinton, Birmingham B32 2DL

**Monday 30th March, Tuesday 31st March,
Wednesday 1st April, Thursday 2nd April**



Early Booking Special Offer

Bookings made before Monday 23rd March 2026:

Full Week £50 Full Day £14 Half Day £8 Half Week £25

**Boys & Girls
aged 5+**

**Full Day
8:30am – 3:30pm**

**Every Child
Will Receive a
Trophy, Medal
and
Certificate**

**Half Day
AM 8:30am – 12:30pm
OR
PM 11:30am – 3:30pm**

FROM AS LITTLE AS £1.79 AN HOUR

WE ACCEPT

Childcare Vouchers
Tax-Free Childcare
Payment plans available

HOW TO BOOK



Online: www.sporty-stars.com

Email: enquiries@sporty-stars.com

Phone: **07473639186**

By booking you agree to our terms and conditions, including first aid and photography consent for our website / social media pages. Full terms & conditions can be found online.

Warming Hearts in the Winter Chill: Festive Gift Delivery for Birmingham NICU

BIRMINGHAM — As a biting winter chill settled over the city this December, **Cycling for Humanity** and the staff of **Woodhouse Primary Academy** braved the freezing temperatures to bring a glow of festive warmth to the **Birmingham Women's Hospital**.

In a joint effort to spread holiday cheer during the Christmas period, the two organisations delivered a collection of specially curated "starter packs" to the Neonatal Intensive Care Unit (NICU). Against the backdrop of frosty mornings, the initiative was driven by a shared commitment to supporting families and frontline healthcare staff caring for premature and critically ill babies.

Handmade with Love: The Starter Packs

These packs were filled with essential items designed to provide comfort and practical support for the hospital's tiniest patients. The donation was a true community effort:

- **Annette and her knitting club** spent weeks hand-knitting beautiful blankets and cardigans to keep the babies warm against the winter cold.
- **Sarah Wright** contributed a collection of delicate, hand-crocheted hats.
- **Woodhouse Academy** provided vital items including bonding cloths, rattles, baby grows, and vests.

These donated presents are intended to provide a sense of comfort and encouragement to families during what can be an incredibly challenging and emotional time.



A Mother's Perspective on the NICU Journey

For families spending their Christmas in the NICU, the season can feel overwhelming. Kuli Chana, a mother whose son Gurpreet is now a healthy eight year old, knows this reality all too well. She described the experience as entering a world where ordinary rules of time, certainty, and control simply don't apply. Instead of the joyful blur of newborn days, parents enter a landscape of monitors and medical terminology where hope is measured in ounces and hours.

Her journey was made even more difficult when her baby faced Necrotising Enterocolitis (NEC), a serious condition involving intestinal damage. "I remember the terror of not knowing what would happen, the helplessness of standing beside an incubator while my baby fought a condition I could not see and could not fix," Kuli recalled. She noted that while love can be "fierce and frightening" at the same time, it is the quiet, exhausted strength of touching a tiny hand through a porthole that sustains a parent.

Kuli shared how NEC tested her in ways she never expected, changing the way she understands what it means to mother a child. "There were days when I held my breath more than my child," she explained, describing the nights when the quiet of the NICU felt "unbearably loud". Yet, even in the uncertainty, she found miracles in stable vital signs and successful procedures, eventually believing they could come out the other side. Her son, Gurpreet, remains a testament to that extraordinary strength and survival.



Making a Meaningful Difference

Representatives from both Cycling for Humanity and Woodhouse Primary Academy worked together to organise the delivery, highlighting the positive impact that community collaboration can have on local healthcare services.

A spokesperson for Cycling for Humanity, reflecting on the importance of the Yuletide delivery, said:

"We are incredibly proud to work alongside Woodhouse Primary Academy to support Birmingham Women's Hospital. This small gesture represents our wider commitment to compassion, community, and making a meaningful difference where it's most needed."

The donation was met with deep appreciation from the hospital team. Staff at the NICU expressed their gratitude for the donation, noting the importance of community support in enhancing patient and family wellbeing during the festive period.

Lessons in Generosity

For Woodhouse Primary Academy, this Christmas project provided a real-world lesson for its pupils. The school remains committed to instilling values of generosity and social responsibility among its students, showing them how a small act of kindness can brighten a difficult time for families facing uncertainty.

As Kuli Chana noted, the prayers of friends and family from all over the world provide the strength to fight when things look bleak. Despite the freezing temperatures outside, this partnership has ensured that the families at Birmingham Women's Hospital feel the full warmth of their community's support.



Friends of Pitts Wood invite you to join us at our

Annual General Meeting

on Saturday 28th March 2026

at 10.00 a.m. at

Quinborne Community Centre

Ridgacre Road, Quinton B32 2TW

We will take you through what has been happening over the last year as well as sharing our news and plans for the future.

We will also need your help to deal with a few business matters such as reviewing our finances and electing a Management Group. It is also a chance for you to ask any questions.

So come along and support us, and help us to look after this hidden gem.

We look forward to seeing you.

Please let us know at least 7 days before the meeting if there are any proposals you would like to raise: Vina Campbell (Secretary)

0121 422 6975/07403359596/vinacampbell@blueyonder.co.uk



***30%
DISCOUNT
AVAILABLE
UNTIL
1ST MARCH**



Ofsted
Registered

EASTER

HOLIDAY CLUBS

HARBORNE ACADEMY, HARBORNE RD, B15 3JL

**MONDAY 30TH MARCH - THURSDAY 2ND APRIL
TUESDAY 7TH - FRIDAY 10TH APRIL**

***£18.83 9AM-4PM (5-11 YEAR OLDS)
£14.00 9AM-1PM (4 YEAR OLDS)
£21.54 (20% DISCOUNT) 2ND - 15TH MARCH
£24.50 (STANDARD PRICE)**

**SCAN THE QR CODE OR VISIT
WWW.PREMIER-EDUCATION.COM/HOLIDAY-CAMPS**



 **Premier**
Education

 **Trustpilot**

Based on 20,000 reviews

Family Day at Kingsbury Water Park

autism
west midlands

For autistic children and their families



Sunday 19th April

11am - 12pm

Grab a cuppa and meet others in similar situations whilst the children regulate



12pm - 1pm

Train ride (2 trains will be running)



1pm - 2pm

Lunch and free play on the park

Bring your own lunch



2pm - 3pm

Childrens treasure hunt



- All children must be accompanied by an adult at all times
- Autism west midlands do not take any responsibility for children or property
- EVERY PERSON attending must have a ticket. Maximum of 2 adults per child

£2.50 per ticket - Drink, train ride and a treasure hunt with every ticket

Meeting location will be sent a week before the event to ticket holders - if you don't receive this email contact AmyS@autismwestmidlands.org.uk

Legal Duties in Education



You must complete this form to guarantee a place:



Date and Time

**Thursday 21st May
2026**

10am - 11.30am

Autism West Midlands are working in partnership with Ken Upton (MBE), to deliver an online workshop for parents and carers of autistic young people.

This online workshop will support parent / carers to gain greater understanding of the legal duties of education settings and much more

autism
west midlands

You will receive a link to join 3 days before from

AmyS@autismwestmidlands.org.uk

Please check you junk mail



Talking Sense Take the hot seat

You must complete this form to guarantee a place:



Thursday 10th
September 2026

6pm - 7.30pm

autism
west midlands

Talking SENSE are a registered charity providing low cost advocacy, advice and support to parents of children with special educational needs & disabilities.

Extensive knowledge, skills and expertise in special educational needs.

Experience and knowledge of how local authorities work and the decisions they make

This online workshop will offer parent / carers the opportunity to ask questions & gain greater understanding.

You will receive a link to join 3 days before from
AmyS@autismwestmidlands.org.uk
Please check your junk mail



Talking SENSE!



Parents & Toddlers Day

Happy Children and Families

**FREE
EVENT**

Humpty Dumpty's Soft Play

 3B, 3b Ewhurst Avenue
Selly Oak, B29 6EY

Wednesday 25th March '26

10am - 12pm or 1-3pm

BSL Interpreters available



Children welcome - play activities

Join us for a hot drink and share

- Ideas on Potty Training toddlers
- Tips on Sleeping, Eating & Feeding
- Free Community Childcare
- Info on Healthy Start and
- Family Hub Support

Come for a chat

**Free
Refreshments
and
Goodie Bags**



BIRMINGHAM
CHILDREN &
YOUNG PEOPLE'S
PARTNERSHIP



Hall Green
Families

For more information you can contact us at
Hallgreen.families@greensquareaccord.co.uk or call **07570 953519**



FOUNDATION

HARBORNE EASTER SOCCER SCHOOLS

Lordswood Girls Academy, Knightlow Rd, Harborne, Birmingham B17 8QB



Dates: **Week 1**
Mon 30th Mar - Thur 2nd Apr

Week 2
Tues 7th - Fri 10th Apr

Times: 9:30 - 15:30

Ages: 5 - 12

